

# Second Floor Women's Tower Surgical Services

AdventHealth Orlando | 601 East Rollins Street

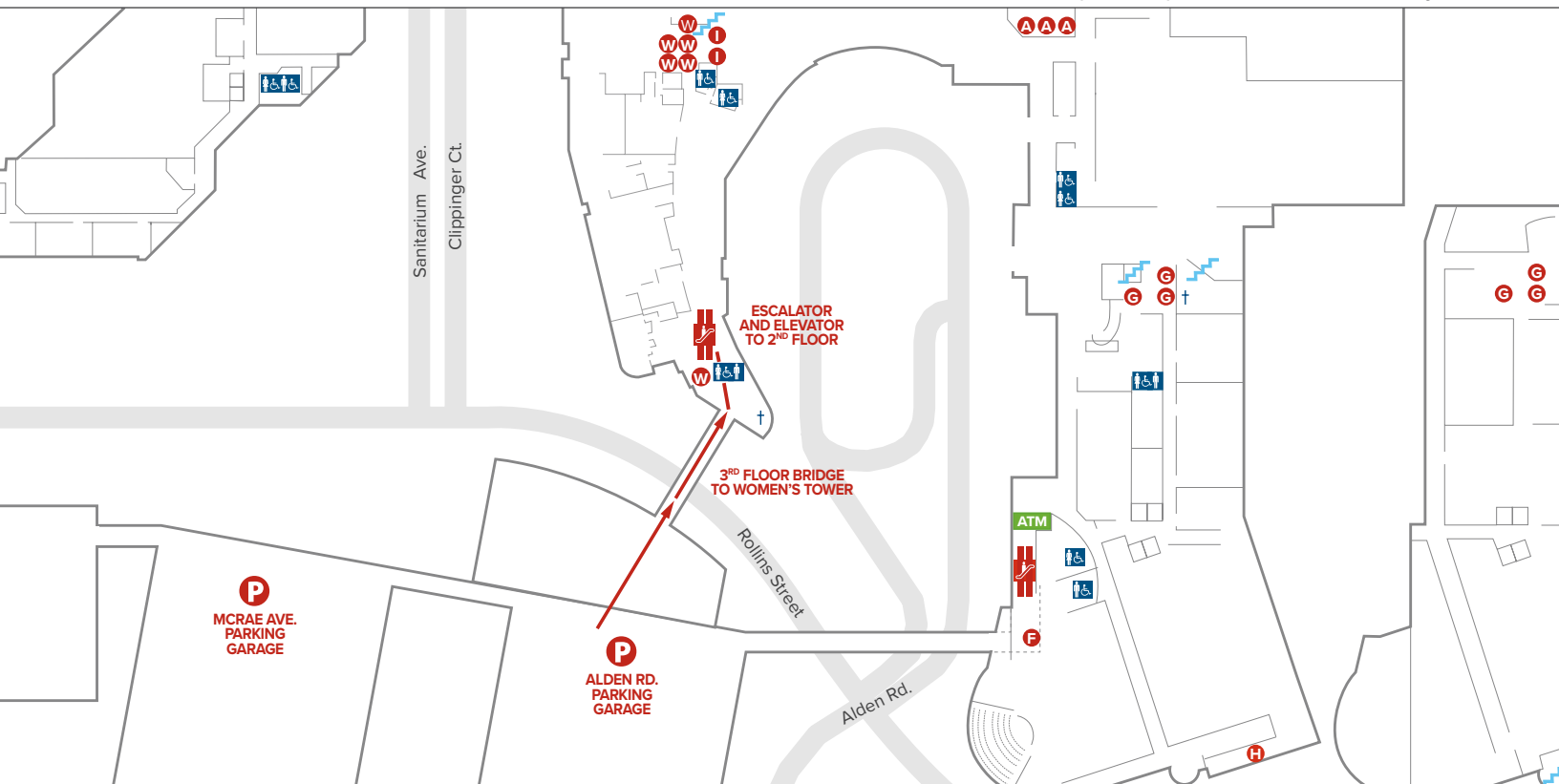
## From Women's Tower Main Entrance or Valet Parking

- As you walk into the main entrance of the Women's Tower, check in at the information desk in the main lobby area.
- After registering, turn right to head towards the elevators.
- Take the elevator up to the 2nd floor.

## From the Alden Parking Garage

- Take the bridge on the 3rd level of the garage to the Women's Tower.
- After you cross, you may take the escalator or the elevator to your left. If you take the elevator, exit to your left then proceed straight. Check in at the information desk in the main lobby area.
- Turn right to find the elevators.
- Take the elevator up to the 2nd floor.

Orlando campus map on the back of this flyer.



**AdventHealth complies with applicable federal civil rights laws and does not discriminate on the basis of race, color, national origin, age, disability or sex.**

ATENCIÓN: si habla español, tiene a su disposición servicios gratuitos de asistencia lingüística. Llame al número siguiente 407-303-3025.

ATANSYON: Si w pale Kreyòl Ayisyen, gen sèvis èd pou lang ki disponib gratis pou ou. Rele nimewo ki anba an 407-303-3025.

# AdventHealth Orlando Campus

